

## Setup

### WinCT-FRD

WinCT-FRD can produce a graph in real-time of the weight and flow rate values transmitted from an A&D GX-A/GF-A series balance using its flow rate display (FRD) function.

This makes it possible to visualize changes in flow rate over time and fluctuations in flow rate and record the data. Below are instructions for installation and use of WinCT-FRD.

## 1. System Requirements

### 1-1) OS

Microsoft Windows 10 / Windows 8.1 / Windows 7 / Windows Vista

Port differs depending on the connection method.

Connection method	Interface		Required Product or Accessory
	Balance	PC	
RS-232C	RS-232C	RS-232C (COM port) *1	RS-232C cable
		USB *1	AX-USB-9P (Serial/USB Converter)
USB *2	USB	USB	USB cable supplied with the balance
Bluetooth	RS-232C	USB	AD-8529PC-W (Bluetooth converter)

\*1 If the PC has no COM port, a Serial/USB converter is available as an accessory to add a COM port on the PC.

\*2 In order to transmit data via the USB interface of the balance, it is necessary to change the internal settings of the balance and install the driver for Virtual COM mode.

Please refer to 3-2) of 3. Settings.

### 1-2) Balance

An A&D balance GX-A/GF-A series

### 1-3) Cable

Please refer to the table in 1-1). For details on the connection methods, refer to 3. Settings.

### CAUTION

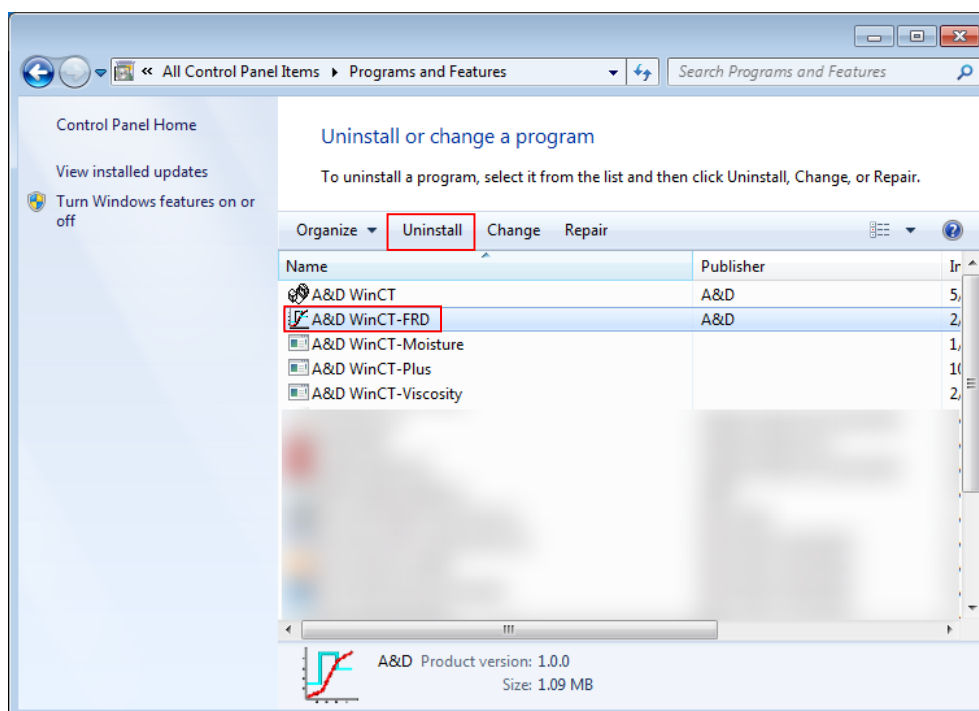
- Use an English version of Windows for proper operation of WinCT-FRD.
- If WinCT-FRD is operated on a non-English version of Windows, the PC may show incorrect characters of data which are already stored before installing WinCT-FRD.
- Back up important data in the PC before installing WinCT-FRD.

---

## 2. Installation Instructions

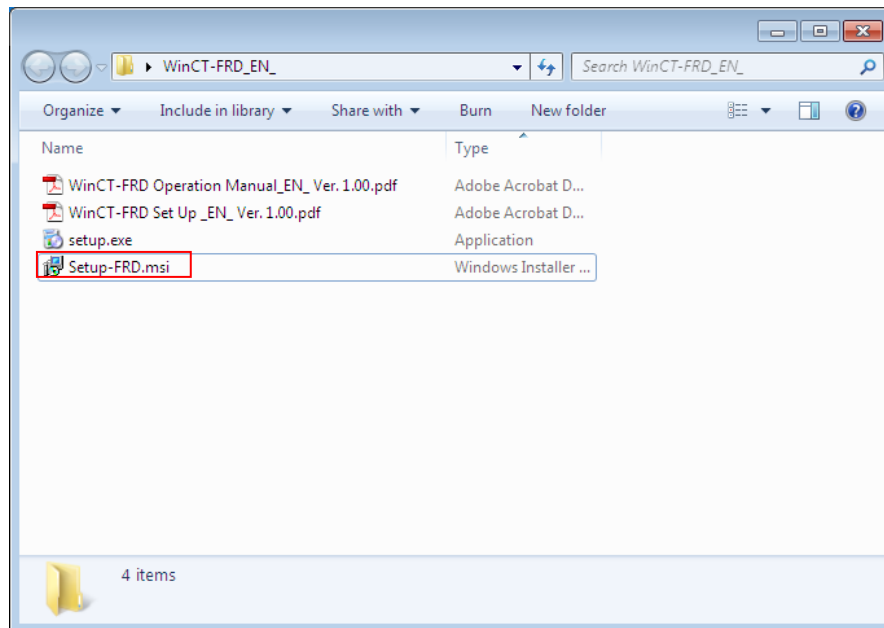
---

Step 1 If a previous version of WinCT-FRD is installed on the PC uninstall it.

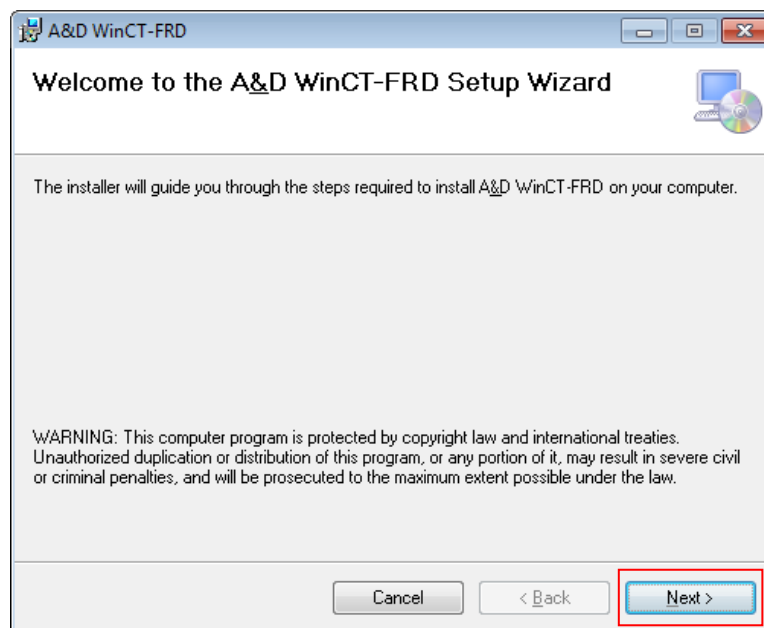


Step 2 Close all open applications in Windows.

- Step 3 Install WinCT-FRD.  
Run Setup-FRD.msi.



- Step 4 Install WinCT-FRD following the instructions on the screen.



---

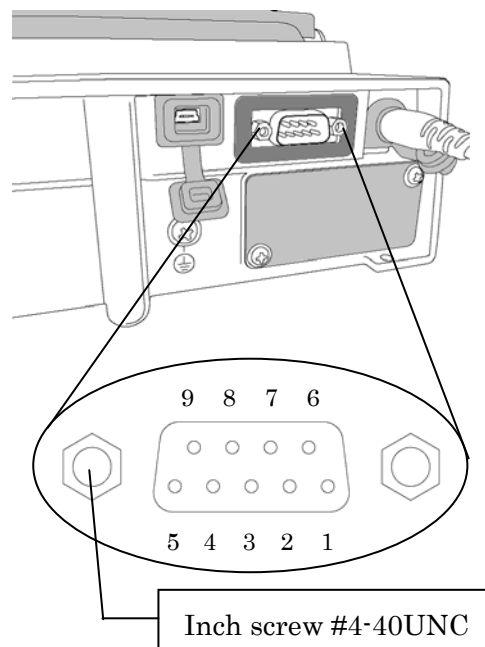
### 3. Settings

---

#### 3-1) Connecting the balance via RS-232C

GX-A/GF-A series D-Sub9 pin arrangement

Pin No.	Signal name	Direction	Meaning, remarks
1	-	-	N.C. (same potential with SG)
2	RXD	Output	Transmitted data
3	TXD	Input	Received data
4	-	-	N.C.
5	SG	-	Signal ground
6	DSR	Output	Data set ready
7	RTS	Input	Request to send
8	CTS	Output	Clear to send
9	-	Output	N.C. (12V Output)



##### <1> RS-232C interface

Confirm the GX-A/GF-A series D-Sub9 pin arrangement and the pin arrangement of the PC and connect the RS-232C cable.

##### <2> USB interface with converter

- Required accessory...AX-USB-9P    Serial/USB Converter

When using for the first time, you will need to install a special driver on the PC.

- Installing the driver

(1) Connect the Serial/USB converter to the USB port on the PC.

(2) Install the driver to the PC.

For the installation procedure, refer to the Serial/USB converter instruction manual.

(3) Using the RS-232C cable provided, connect the Serial/USB converter to the balance.

The device name is "USB Serial Port".

#### 3-2) Connecting the balance via USB

- Required accessory...USB cable supplied with the balance.

When using for the first time, you will need to install a special driver on the PC.

- Preparation...Changing the balance to virtual com mode

- (1) Set the balance to weighing mode ° 0.00 g
- (2) Press and hold the SAMPLE key to display bRSFnC.
- (3) Press the SAMPLE key several times and press the PRINT key with USb.
- (4) UFnC is displayed. Press RE-ZERO key several times to display UFnC VCOM.
- (5) Press the PRINT key to return to the internal settings.
- (6) Press the CAL key from RP Fnc to return to weighing display.

- Installing the driver

Windows 10:

When you connect the GX-A/GF-A to the PC, the driver is installed automatically.

The device name is "USB Serial Device".

Windows 8.1, Windows 7, Windows Vista:

- (1) Extract the compressed folder "GXA\_GFA\_DRIVER" downloaded from our website (<http://www.aandd.jp/>).
  - (2) Please refer to "GX-A/GF-A series USB interface How to install the Virtual COM mode driver" in the folder for installation.
- The device name is "AND USB Port for Balance".

3-3) Connecting the balance via Bluetooth

- Required accessory ...AD-8529PC-W Bluetooth Converter for PC

When using for the first time, you will need to install a special driver on the PC.

- Installing the driver

Windows 10:

Connect the AD-8529-PC (converter for PC) to the PC, and the driver is installed automatically.

The device name is "USB Serial Device".

Windows 8.1, Windows 7, Windows Vista:

- (1) Connect the AD-8529PC-W (converter for PC) to the PC.
  - (2) Please refer to the manual "Installing the driver" provided with the AD-8529PC-W for installation.
- The device name is "AND Bluetooth Converter".

---

#### 4.Starting WinCT-FRD

---

Select WinCT-FRD from the START menu. The default menu address is [Start] - [program] - [A&D WinCT-FRD]. You will find the instruction manual in the Readme file under [A&D WinCT-FRD].

#### CAUTION

- WinCT-FRD is a program for balances that use the A&D format. A&D does not guarantee performance or compatibility when other manufacture's balances are used with WinCT-FRD.
- If you have problems or questions about compatibility with third party software, contact the manufacturer for information.

---

#### 5. License Agreement and Limited Warranty

---

- WinCT-FRD is subject to change without notice and does not represent a commitment by A&D to support earlier versions or to make changes to support non standard computers.
- WinCT-FRD is intended for the transmission of data from an A&D balance to a PC, and command transmission for controlling the balance.
- Under copyright laws, the WinCT-FRD program may not be copied, in whole or part, without the consent of A&D, except as specified in the license agreement.
- WinCT-FRD should only be installed on the hard disk or peripheral storage devices of a PC connected to an A&D balance.
- A&D bears no liability for direct, indirect, special, incidental, or consequential damages resulting from any defect in the WinCT-FRD program or the readme file, even when advised of the possibility of such damage.
- A&D is not responsible or liable for the loss of any programs and/or data stored in the PC on which WinCT-FRD was installed, including the costs of recovering said lost programs or data.

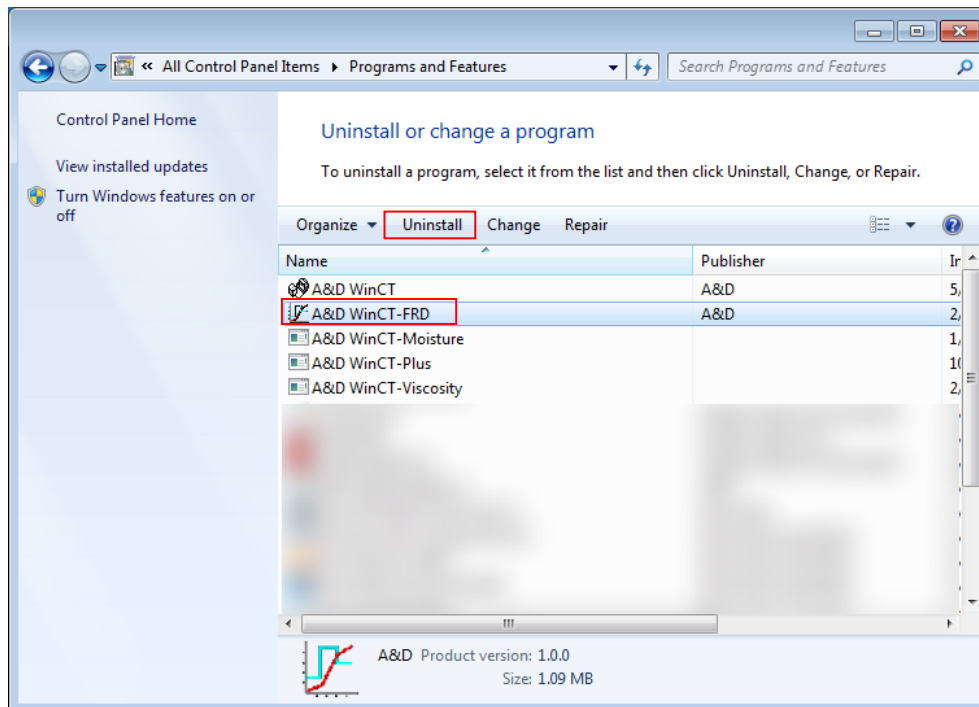
Microsoft, Windows, Excel and Word are trademarks or registered trademarks of Microsoft Corporation.

---

## 6. Uninstallation Instructions

---

Use the "Add/Remove Programs" icon in the control panel to remove this program from your PC.



19/02/2018

A&D